

TECHNICAL SPECIFICATIONS

Drug / Excipient	
Drug	Sirolimus
Drug Dose	1.27 µg/mm²
Drug Carrier	Phospholipid
Balloon	
Balloon Material	Polyamide
Catheter Design	RX/Monorail
No. of folds	3**
Compliance	Semi-compliant

**2 folds in 1.50 mm diameter

Delivery System	
Shaft Diameter - Proximal	1.8 F
Shaft Diameter - Distal	2.52 F
Usable Catheter Length	140 cm
Tip Profile	0.016"
Nominal Pressure	6 bar
Rated Burst Pressure	16 bar*
Guiding Catheter Compatibility	6F
Guidewire Compatibility	0.014" maximum recommended
Crossing profile (varies with size)	0.029"

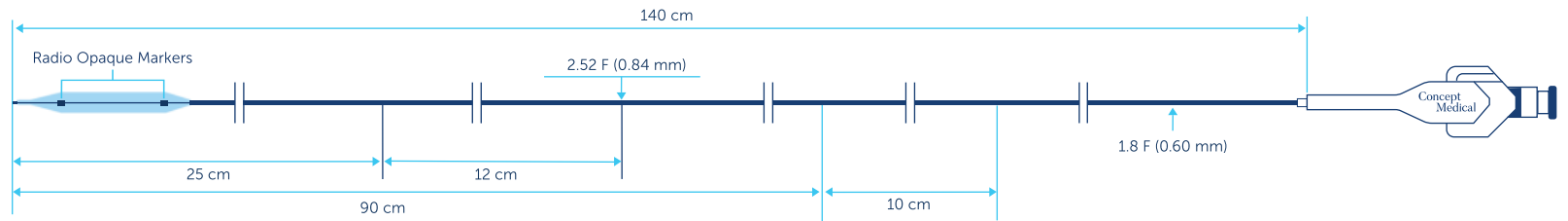
We highly recommend preparing the vessel bed before treatment with Magic Touch

*Do not Exceed RBP

14 bar for 4.00 mm/25 mm to 40 mm

ORDERING INFORMATION

Balloon Dia(mm)	Balloon Length (mm)						
	10	15	20	25	30	35	40
1.50	CMT15010	CMT15015	CMT15020	CMT15025	CMT15030	CMT15035	CMT15040
2.00	CMT20010	CMT20015	CMT20020	CMT20025	CMT20030	CMT20035	CMT20040
2.25	CMT22510	CMT22515	CMT22520	CMT22525	CMT22530	CMT22535	CMT22540
2.50	CMT25010	CMT25015	CMT25020	CMT25025	CMT25030	CMT25035	CMT25040
2.75	CMT27510	CMT27515	CMT27520	CMT27525	CMT27530	CMT27535	CMT27540
3.00	CMT30010	CMT30015	CMT30020	CMT30025	CMT30030	CMT30035	CMT30040
3.50	CMT35010	CMT35015	CMT35020	CMT35025	CMT35030	CMT35035	CMT35040
4.00	CMT40010	CMT40015	CMT40020	CMT40025	CMT40030	CMT40035	CMT40040



*The above diagram is just an illustration of the product.

Disclaimer: The law restricts these devices to sale by or on the order of a physician. Indications, contradictions, warnings can be found in the product labelling / IFU supplied with each device. For restricted use only in countries where product is registered with applicable health authorities.



A Concept Medical Group Company

f t @ in /conceptmedicals

✉ info@conceptmedical.com

🌐 www.conceptmedical.com

Scan for more details

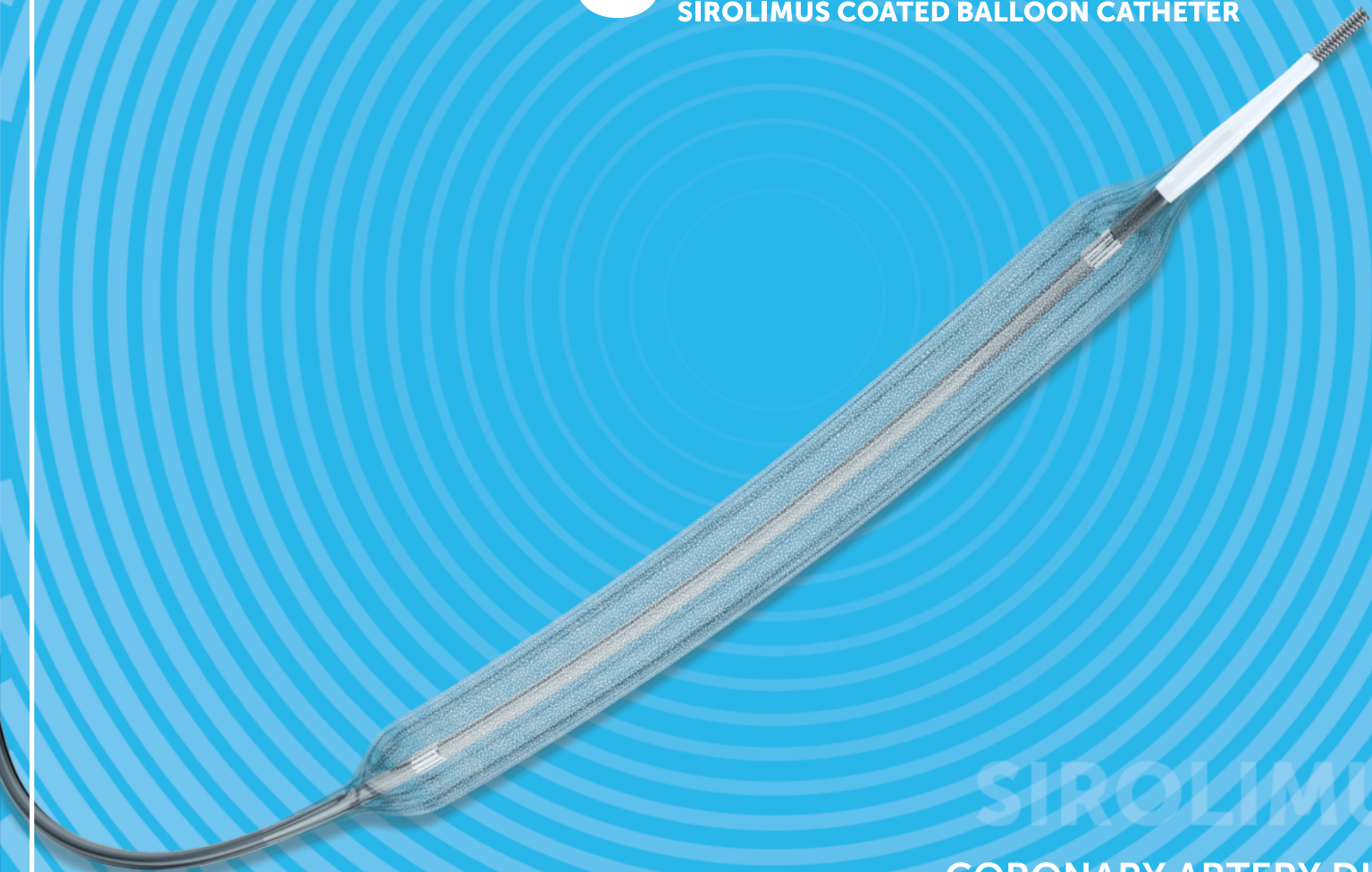


ES,BA,MT,BRO,ver.2.0.24-01



MagicTouch

SIROLIMUS COATED BALLOON CATHETER



SIROLIMUS

CORONARY ARTERY DISEASE

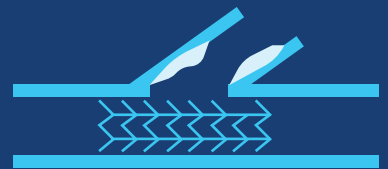
MAGICTOUCH

Magic Touch is a Sirolimus Drug Coated Balloon catheter for the treatment of the coronary arteries; intended for treating In-Stent Restenosis, Small Vessels, Bifurcations lesions and De-Novo lesions.



DE-NOVO LESIONS

Concept of treating with leaving Nothing behind in patients with highly susceptible restenosis rate due to inherent disease conditions and comorbid conditions.



BIFURCATION LESIONS

Addresses the issue of metal to artery ratio by allowing one stent technique and less complications in side branch.



IN-STENT RESTENOSIS

Addresses the issue of restenosis by homogenous drug distribution without further increasing metal load in diffuse, focal and edge stenosis.



SMALL VESSELS

Helps in treating challenging anatomies in small diameter without losing lumen diameter.

UNIQUE COATING TECHNOLOGY

Magic Touch is developed with Nanolute Technology which possesses unique circumferential coating technology that facilitates homogeneous drug distribution to target lesions



COATING

Circumferential Coating is performed under Low Pressure inflation leading to 100% surface area coating



REFOLDING

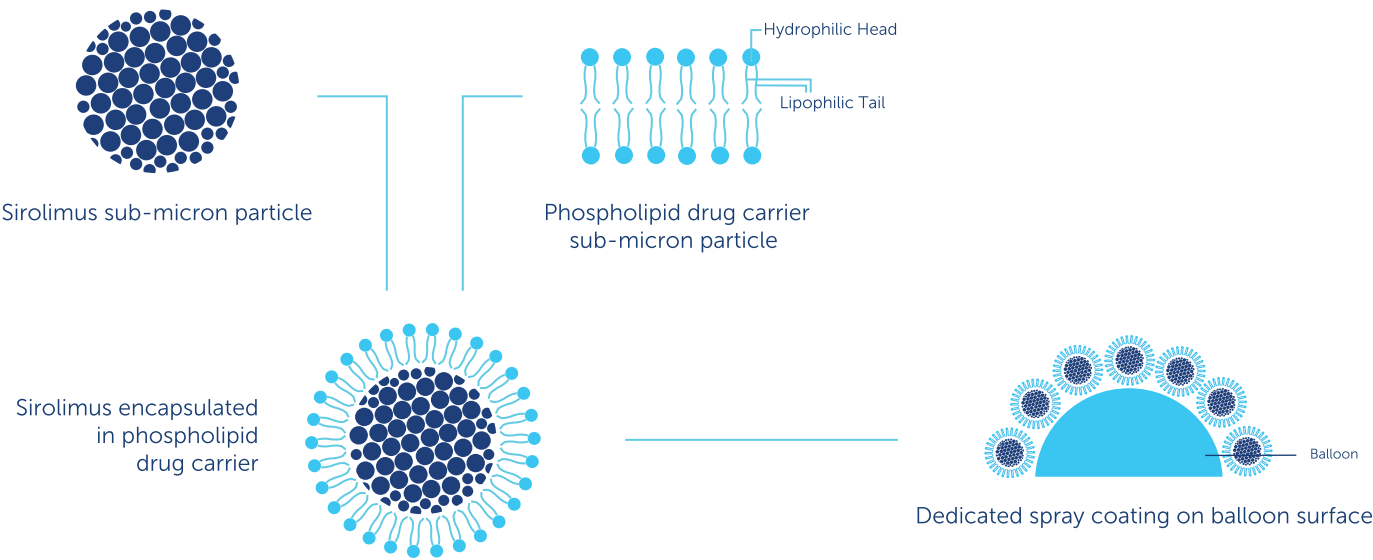
3 Folds



INFLATION

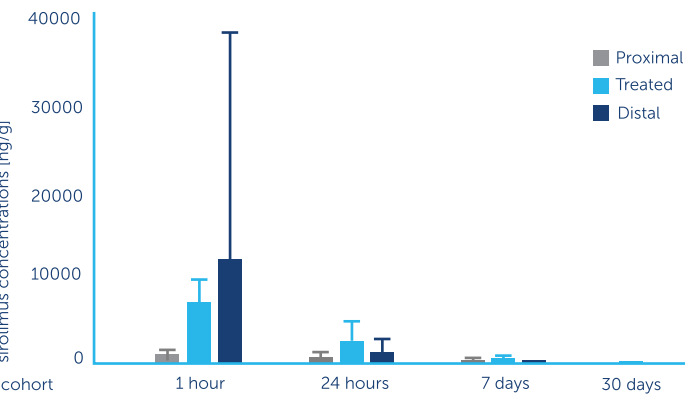
Homogeneous Drug Delivery due to Circumferential Coating

NANOLUTE TECHNOLOGY

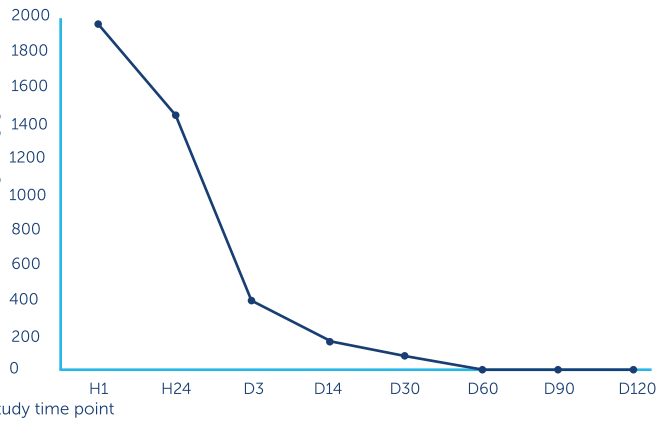


PHARMACOKINETIC STUDY

In ISR Lesion*



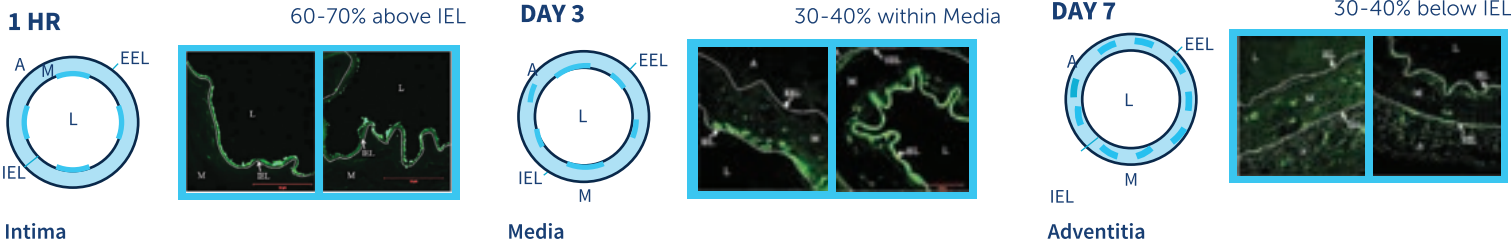
In De-Novo Lesion



*Study Ongoing

SIROLIMUS DISTRIBUTION STUDY

DTF labelled Sirolimus was used to assess the drug distribution following DCB treatment*



A: Adventitia; EEL: External Elastic Lamina; IEL: Internal Elastic Lamina; L: Lumen; M: Media *EuroIntervention. 2013 May 20;9(1): 148-56