

MagicTouch PTA is Non-Inferior to Paclitaxel DCB in
The World's Only RCT for SFA

SIRONA

World's only RCT comparing Sirolimus vs Paclitaxel head-to-head to evaluate the primary patency at 1 year in the treatment of SFA.



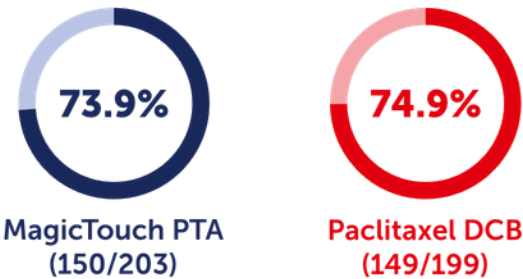
COMPLEX PATIENT COHORT



PRINCIPAL INVESTIGATOR : ULF TEICHGRÄBER

1 Year Clinical Outcomes

Primary Patency



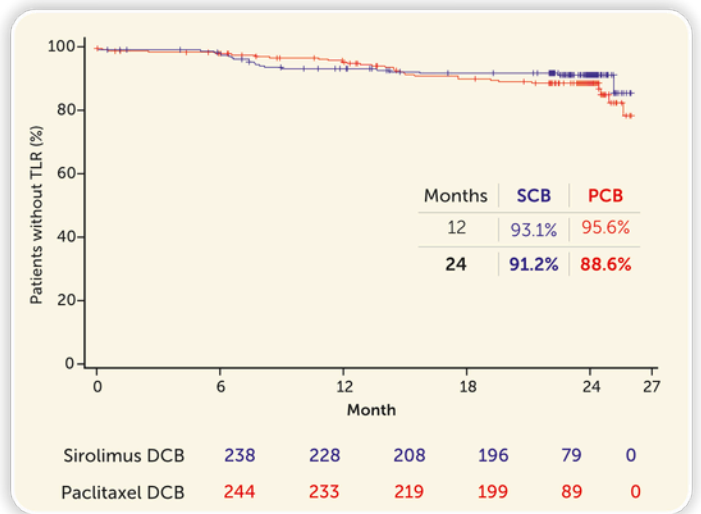
Rate difference: -1.0% (-9.6% to 7.6%)

P = 0.019 (non-inferiority)



P = 0.75 | Rate Difference = -1.2% (non-inferiority)

2 Year Clinical Outcomes*



P = 0.003 (non-inferiority)

Key Takeaways

SIRONA is the only RCT proving non-inferiority of Sirolimus DCB – MagicTouch PTA against a direct comparison with 7 PCBs at 1 year primary patency. At two years, there were no significant differences in primary patency, improvement in the vascular quality of life, freedom from cd-TLR, major target limb amputation, and all-cause mortality between the groups.

*Presented by Prof. Ulf Teichgräber at ASVS 2025. | Preliminary result before CEC adjudication

